

- general notes
1.

○

This drawing is copyright Proctor and Matthews Architects and must not be copied in whole or part without prior consent.
2.

Do not scale from this drawing.
3.

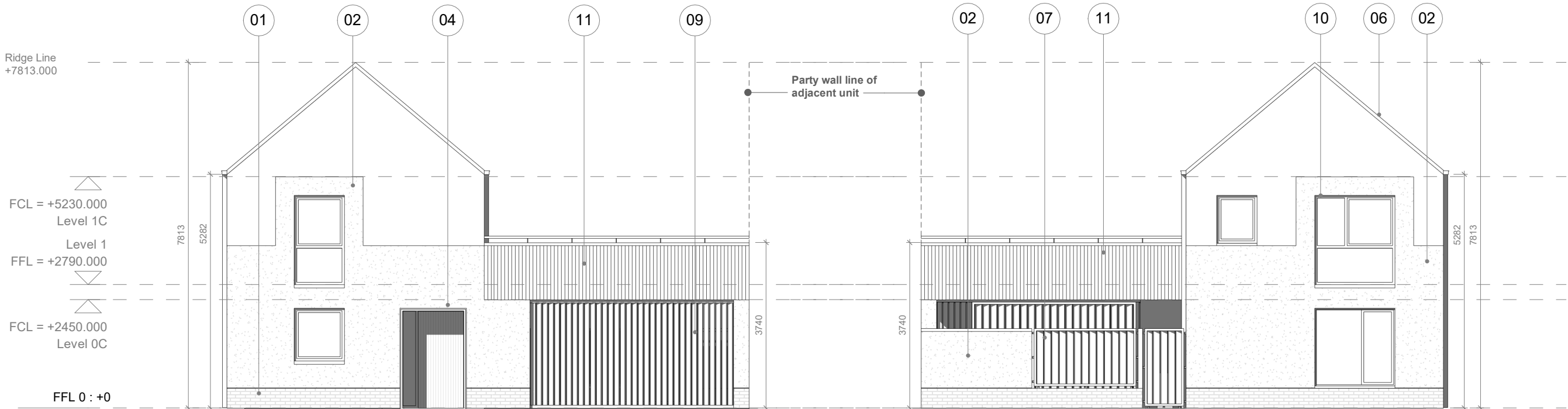
Refer to drawing number.
4.

This drawing is to be read in conjunction with all other relevant architects and engineer's drawings.
5.

All dimensions to be checked on site prior to commencement of works and any discrepancies are to be checked with the architect immediately.
6.

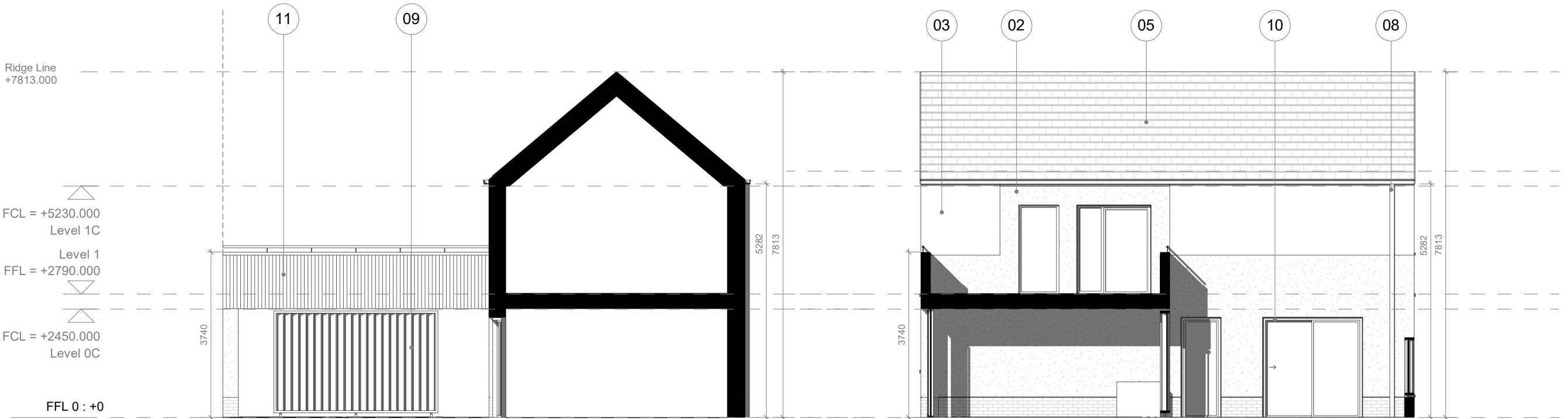
Unless otherwise stated all dimensions are in mm.

Obs. 1: Garden wall heights are dependant on location within masterplan.
Obs. 2: Elements of side elevations become party walls dependant on location within masterplan.
Obs. 3: When terraces are back to back, refer to masterplan for pergola details.
Obs. 4: Please refer to masterplan layout for individual pergolas and locations.



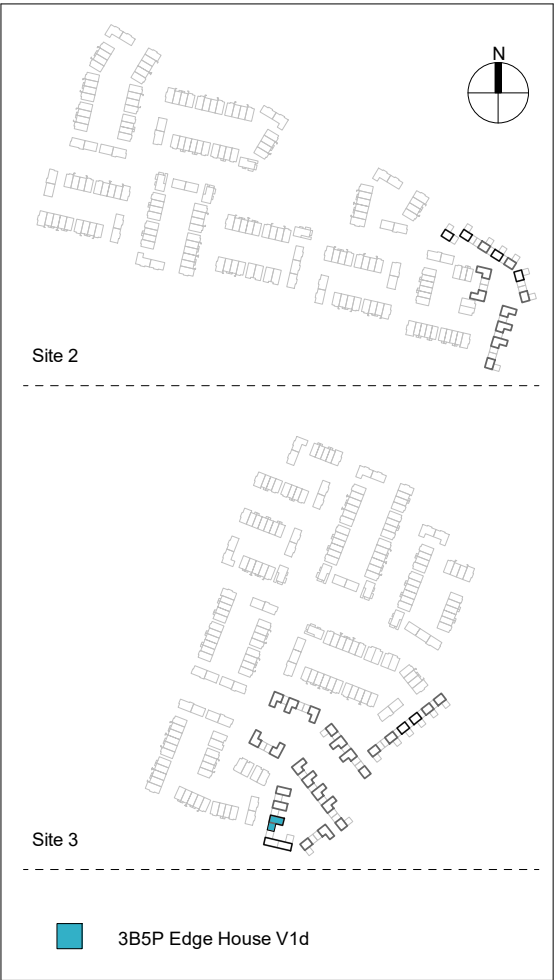
Edge House 3b5p_Front Elevation_V1d

Edge House 3b5p_External Rear Elevation_V1d



Edge House 3b5p_Internal Rear Elevation_V1d

Edge House 3b5p_Internal Side Elevation - Parking_V1d



P02	08.12.21	For Planning	LG
P01	26.10.21	For Planning	LG
/	19.03.21	For Planning	HS
rev	date	description	dw

client Glenveagh

project A496 Lands at Hollystown-Kilmartin

status S4 - Suitable for stage approval

drawing title 3 Bed 5 Person 2 Storey Edge House (Side by side parking)_V1d - Elevations

drawing no A496-PMA-XX-XX-DR-A-2004

project no - originator - volume - level - type - role - number			
scale	1:100	date	03/02/21
original	A2	revision	P02
		checked	CM

Proctor & Matthews Architects

address 7 Blue Lion Place, 237 Long Lane, London SE1 4PU
telephone +44 (0)20 7378 6695
fax +44 (0)20 7378 1372
email info@proctorandmatthews.com
website www.proctorandmatthews.com